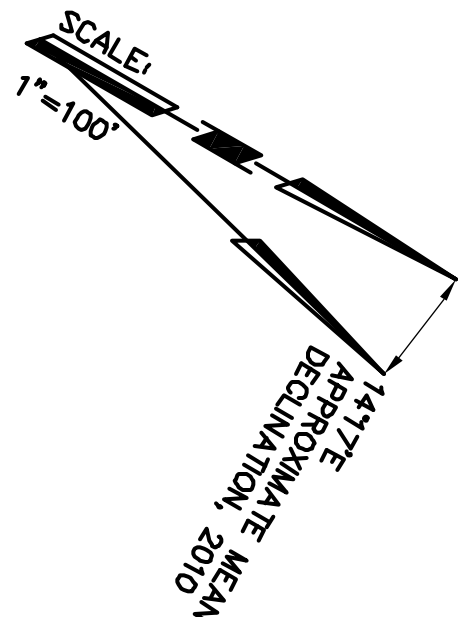
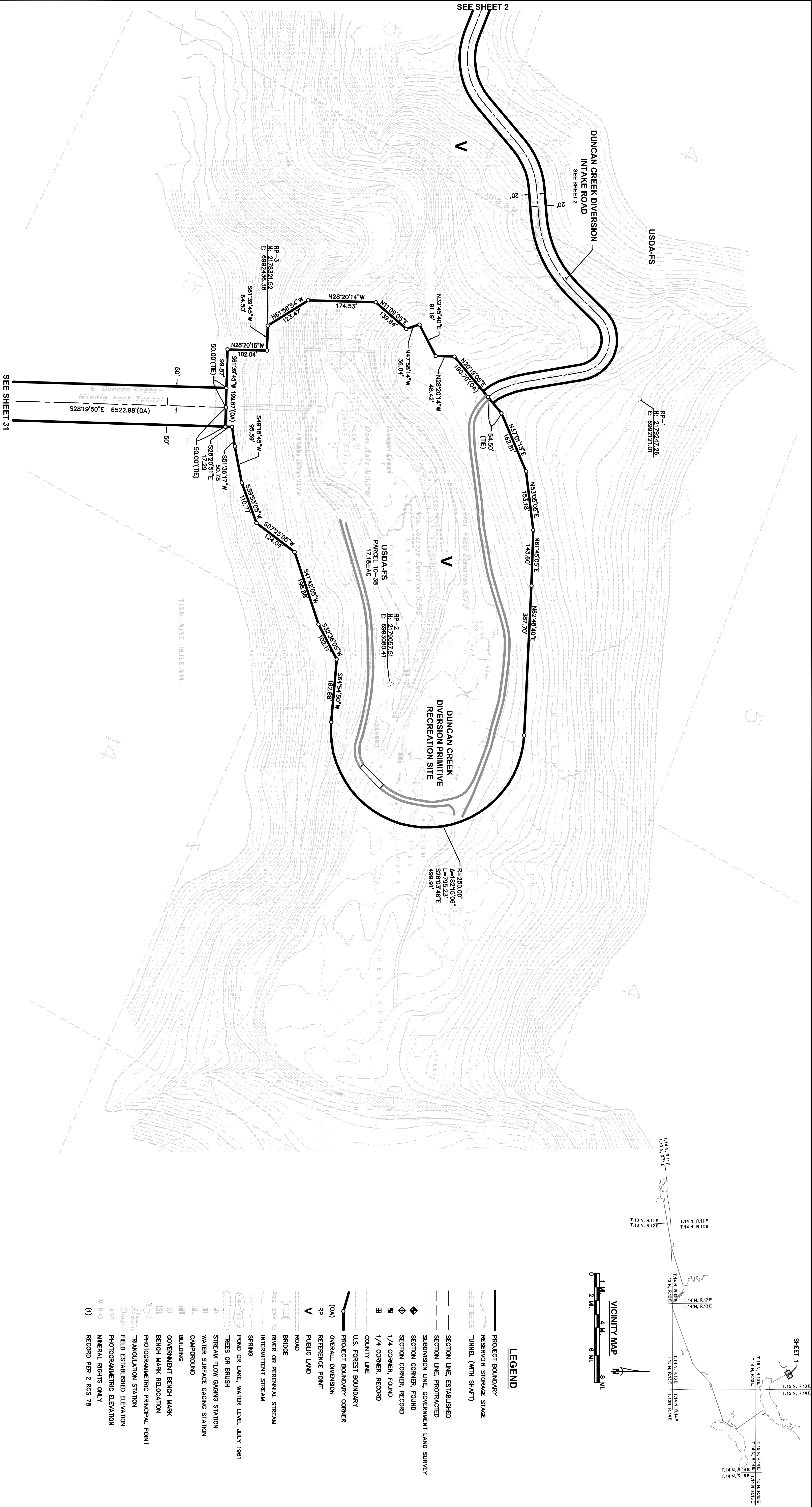




I CERTIFY THAT I SUPERVISED THE SURVEY OF THE PROJECT LANDS THAT THE PROJECT BOUNDARY DELINEATION FOR THE MIDDLE FORK AMERICAN RIVER PROJECT AS SHOWN ON THIS EXHIBIT "G" IS DEVELOPED WITHIN REASONABLE ACCURACIES AS REQUIRED IN 18CFR44.39 & 18CFR44.1 TO THE GEOGRAPHIC LOCATION. THIS EXHIBIT IS BASED UPON MAPS OF THE EXHIBIT 18CFR44.1 OF THE MIDDLE FORK AMERICAN RIVER PROJECT NO.2079 AND BOOK 2 SURVEY'S PAGE 78 OFFICIAL RECORDS OF PLACER COUNTY AND CORRECTLY SHOW HEREON. SEE CONTROL SCHEME FOR DETAILS OF THE BOUNDARY DELINEATION AND DATA ACQUISITION.

ALL FACILITIES AND FEATURES SHOWN HERE ON ARE PER DATA COLLECTED BY SHADED TOPOGRAPHY SHOWN HEREON PER EXHIBIT 'K', SHEET '1'; MIDDLE FORK AMERICAN RIVER PROJECT; DUNCAN CREEK DIVERSION PROJECT AREA REVERSE SEP. 2, 2008  
OTHERS, EXCEPT FOR THE DUNCAN CREEK DIVERSION INTAKE ROAD.

NAD83 CALIFORNIA STATE PLANE COORDINATE SYSTEM ZONE 11 (CCS83, ZONE 2)  
U.S. SURVEY FEET



**EXHIBIT 'G' PROJECT 2079**  
MIDDLE FORK AMERICAN RIVER PROJECT  
DUNCAN CREEK DIVERSION PROJECT AREA  
A PORTION OF SECTION 24, T.15 N., R.13 E., M.D.M.



**SHEET 1 OF 33**